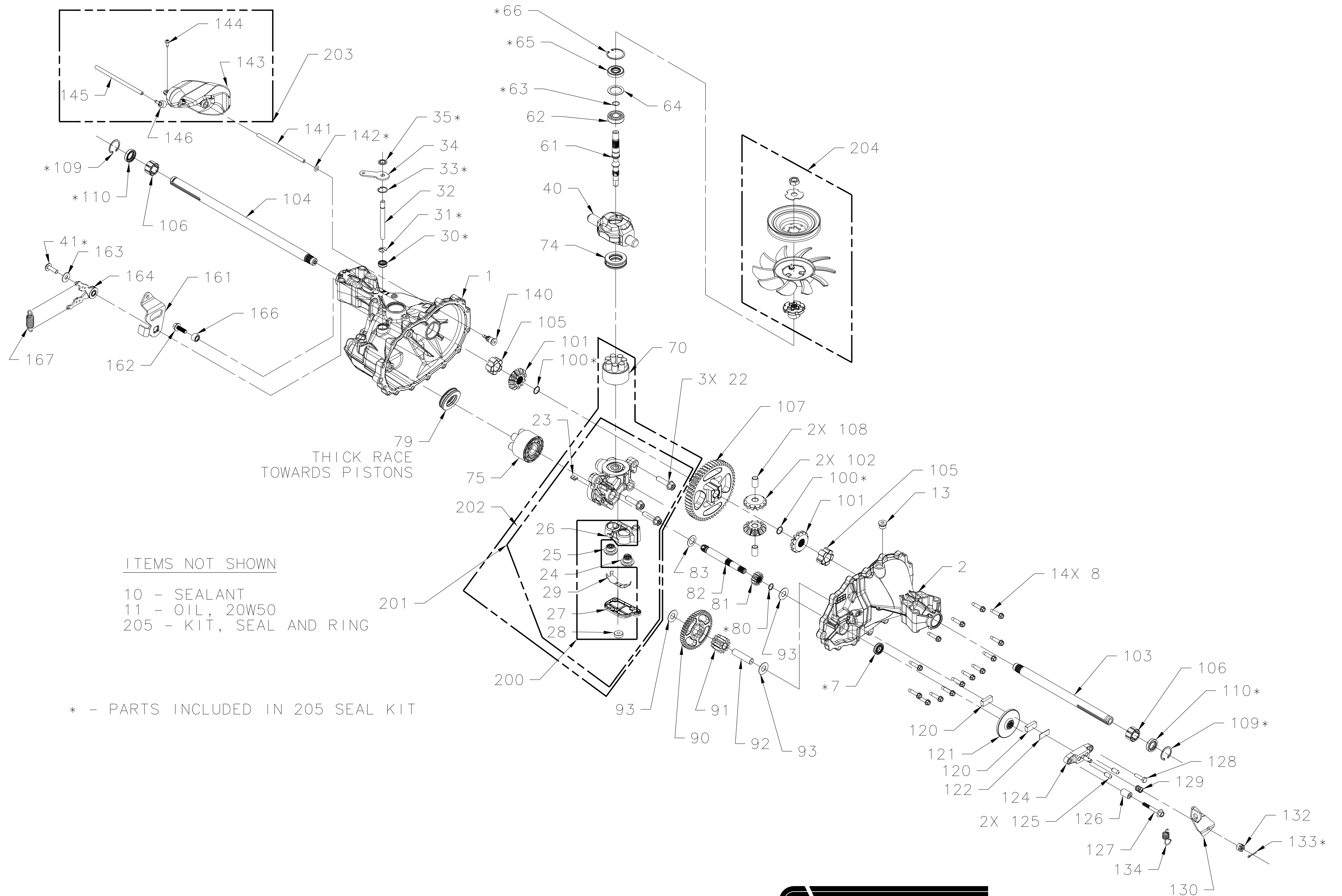


T2-ADBFB-2X3C-17X1
HG-MODEL NUMBER



ITEMS NOT SHOWN

- 10 - SEALANT
- 11 - OIL, 20W50
- 205 - KIT, SEAL AND RING

* - PARTS INCLUDED IN 205 SEAL KIT



ITEM #	PART #	DESCRIPTION	QTY
1	71546	MAIN HOUSING	1
2	71547	SIDE HOUSING	1
7	52820	SEAL, LIP .50X1.0X.25 TC	1
8	53246	SCREW, HEX WASHER, 1/4-20 x 1.125	14
10	50928	SEALANT	1
11		OIL, 20W50	69.3oz
13	9005110-5600	PLUG 9/16-18 (METAL)	1
22	52137	BOLT, HEX FLANGE, 3/8-16, C/S	3
23	52502	PLATE, BYPASS	1
24	51084	ASSEMBLY, CHECK PLUG W/ WASHER, .027	1
25	51084	ASSEMBLY, CHECK PLUG W/ WASHER, .027	1
30	51626	SEAL, LIP .375X.75X.25 TC	1
31	51628	RING, RET .375 EXT	1
32	52459	ROD, ACTUATOR BYPASS	1
33	51627	RING, RET .750 INT	1
34	52460	ARM, BYPASS	1
35	51630	RING, RET .375 EXT	1
40	52450	TRUNNION, SWASH PLATE	1
41	51812	SCREW, 5/16-18 x 1	1
61	52462	SHAFT, INPUT	1
62	2003043	BALL BEARING 15 x 35 x 11	1
63	2003016	RING, RET WIRE .512 ID	1
64	2003018	WASHER 1.23 x 1.56 x .04	1
65	9008000-0128	SEAL, LIP 15 x 35 x 7	1
66	2003052	RING, RET 1.56 INT	1
70	72228	KIT, BLOCK, 7 PISTON, 8cc	1
74	52465	BEARING, THRUST BALL 27 x 47 x 14	1
75	70331	ASSEMBLY, PISTON BLOCK, 5P 10cc	1
79	50551	BEARING, THRUST BALL 30 x 52 x 13	1
80	44354	RING, RET .50 EXT	1
81	52466	GEAR, 13T PINION	1
82	52467	SHAFT, MOTOR	1
83	52468	WASHER .60 x 1.00 x .03	1
90	52469	GEAR, 11T/48T	1
91	52470	GEAR, JACKSHAFT 11T	1
92	52471	JACK SHAFT (PIN)	1
93	50132	WASHER .5 x 1.0 x .03	3
100	44871	RING, RET - SPIRAL .625 EXT	2
101	51769	GEAR, BEVEL 12T SPLINE ID	2
102	51768	GEAR, BEVEL 12T .50ID	2
103	53507	SHAFT, AXLE, KEYED, 11.39 x .75	1
104	53506	SHAFT, AXLE, KEYED, 16.99 x .75	1
105	52280	BUSHING, INBOARD	2
106	52278	BUSHING, OUTBOARD	2
107	52472	GEAR, 53T BULL	1
108	52279	PIN, DIFFERENTIAL	2
109	52275	RING, RET, INT AXLE	2
110	53901	SEAL, LIP .75 x 1.125 x .25	3
120	44132	PUCK, BRAKE	2
121	52473	ROTOR, BRAKE	1
122	44134	PLATE, PUCK	1

T2-ADBF-2X3C-17X1
HG-MODEL NUMBER

ITEM #	PART #	DESCRIPTION	QTY
124	62589	YOKE, BRAKE	1
125	44127	PIN, BRK .31 x .73 PLATED	2
126	23711	SPACER .26 x .57 x .87	1
127	51146	SCREW 1/4-20 x 2.0 W/PATCH	1
128	44433	SCREW 1/4-20 x 1 (PATCH)	1
129	50919	SPRING, COMP BRAKE ANTI-DRAG	1
130	52374	ARM, BRAKE	1
131	44130	WASHER .34 x .88 x .06	1
132	44142	NUT, CASTLE 5/16-24 PL	1
133	44101	PIN, COTTER 3/32 x 3/4	1
134	51529	SPRING, BRAKE ARM BIAS	1
140	51143	5/16 SAE, 5/32 TUBE	1
141	52474	HOSE	1
142	51144	O-RING .103 x .299 ID	1
150	52315	FAN, 7", 10 BLADE	1
151	51721	PULLEY, 4.4"	1
152	51244	NUT, HEX LOCK, 1/2-20 (NYLON INSERT)	1
153	51076	SCREW, 1/4-20 x 0.875	3
161	52478	ARM, CONTROL, RTN	1
162	51064	BOLT, HEX FLANGE HEAD	1
163	44130	WASHER .34 x .88 x .06	1
164	52611	ASSEMBLY, RTN BI-DIRECTIONAL	1
165	52618	ARM, NEUTRAL ASSEMBLY	1
166	52481	BUSHING	1
167	52401	SPRING, EXTENSION	1
180	53319	SPRING CLIP - HOUSING THRUST	2
200	71553	KIT, FILTER	1
		BASE, FILTER	1
		COVER, FILTER	1
		RING, MAGNET	1
		DEFLECTOR	1
201	72195	CENTER SECTION WITH FILTER	1
		CENTER SECTION	1
		BEARING, JOURNAL	1
		BOLT, HEX FLANGE 3/8-16	3
		PLATE BYPASS	1
		ASSEMBLY, CHECK PLUG W/ WASHER, .027	1
		ASSEMBLY, CHECK PLUG W/ WASHER, .027	1
		BASE, FILTER	1
		COVER, FILTER	1
		RING, MAGNET	1
		DEFLECTOR	1

ITEM #	PART #	DESCRIPTION	QTY
203	71549	KIT, E-TANK	1
		TANK EXPANSION	1
		BOLT 10-32 x 1/2	1
		TUBE	1
		CAP BARBED VENT	1
204	72134	KIT, FAN/PULLEY	1
		FAN 7.0 (10 BLADE)	1
		DISC, PULLEY Ø4.5 INCH	1
		NUT, HEX JAM 1/2-20	1
		WASHER, OD SLOTTED	1
		HUB, PULLEY	1
205	71554	KIT, SEAL	1
		SEAL, LIP .50 X 1.0 X .25 TC	1
		SEAL, LIP .375 X .75 X .25 TC	1
		RING, RET .375 EXT	1
		RING, RET .750 INT	1
		RING, RET .375 EXT	1
		SCREW 5/16-18 X 1	1
		RING, RET WIRE .512 ID	1
		SEAL, LIP 15 X 35 X 7	1
		RING, RET 1.56 INT	1
		RING, RET .500 EXT	1
		RING, RET - SPIRAL .625 EXT	2
		RING, RET, INT AXLE	2
		SEAL, LIP .75 X 1.125 X .25	3
		PIN, COTTER 3/32 X 3/4	1
		O-RING .103 X .299 ID	1

